

ZNF_S

22-44-66W

LED Chip

Aluminium Body
Low Cooper

PC Difusser
UV Stabilized

2x 1/2"
Cable entries



ZONE 1-2 / 21-22

IP 66

$-20\text{ }^{\circ}\text{C} < T_a < +55\text{ }^{\circ}\text{C}$

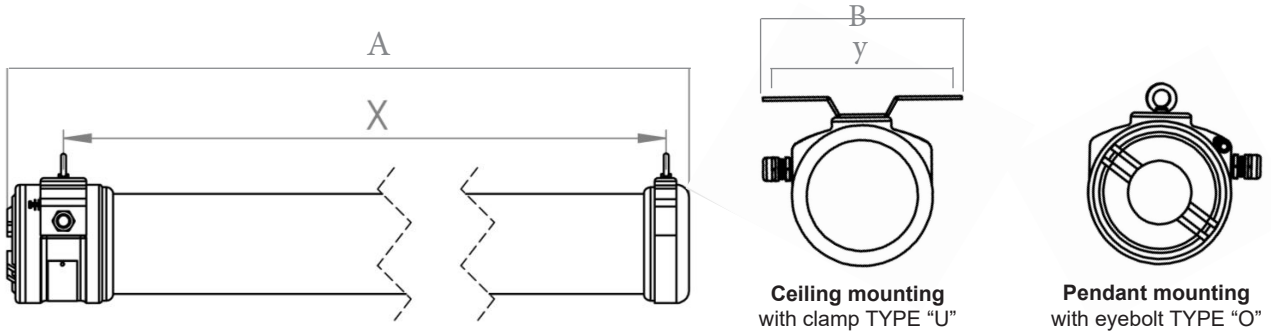
Emergency Kit

Product	ZNF Series Led String Lamp
Certification	SCA 19 ATEX 015X
Marking	II 2G Ex db IIB T6 Gb II 2D Ex tb IIIC T85°C Db
IP	IP 66
Ambiant Temp.	-20 °C up to +55 °C
Standarts	EN60079-0: 2018; EN60079-1: 2014; EN60079-31: 2014
Cable Entries	2x 1/2"
Body	Low Cooper Aluminium Alloy
Difusser	Shock and high temperature resistant polycarbonate tube
Gaskets	NBR oring on cover and high temp. res. silicone
Paint	Electrostatic Powder Coat
Circuit	Eaglerise or Osram Driver.
Rated Voltage	220/240V
Frequency	50/60 Hz
Application	Oil refineries, Chemical and petrochemical plants, Boiler rooms etc.
IK Rating Body	IK10

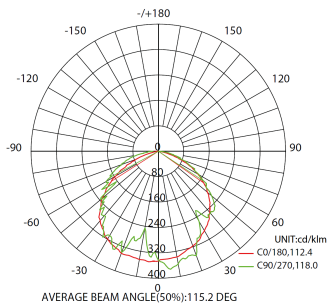
included technology

| **SAMSUNG** |

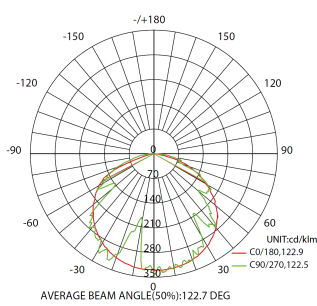
DIMENSIONAL DRAWING



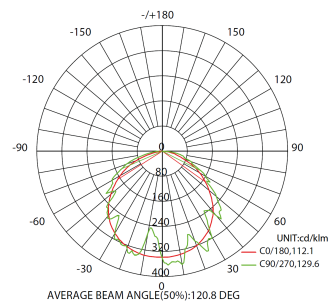
	A	B	C	x	y	weight (kg)	Lumen
ZNF.22WS	720	210	142		186	6,5	~2504
ZNF.44W	1320	210	142		186	8,5	~5731
ZNF.66WS	1320	210	142		186	8.5	~7829
ZNF.22WS.EM	720	210	142		186	6,7	~2504
ZNF.44WS.EM	1320	210	142		186	8,7	~5731
ZNF.66WS.EM	1320	210	142		186	8.7	~7829



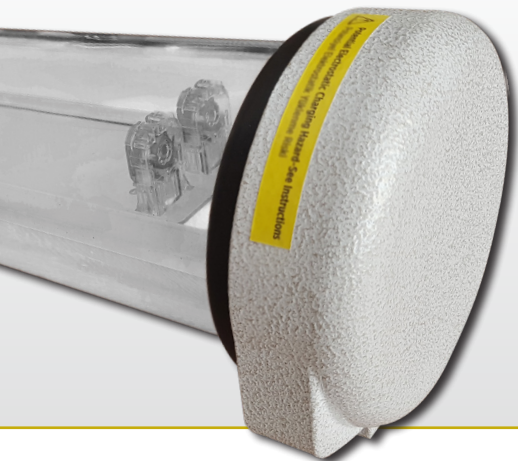
ZNF.22W - 6500K



ZNF.44W - 6500K



ZNF.66W - 6500K



ZNF.

22W
44W
66W

S LED String
EM for emergency kit

ZNF.X SERIES type fluorescent lamp, led chip and led tube comprises assembly with two end caps. The housing consists of a transparent polycarbonate tube with aluminium end caps. The electronics are located within the flameproof enclosure. Tube and end caps sealed with cemented joint. Both end caps connected together by two 6 mm diameter tie bars, therefore compressing the tube and cemented joints between caps. The equipment is intended for fixed installation. The equipment has normal fluorescent lamp, led fluorescent lamp and emergency kit variations.

